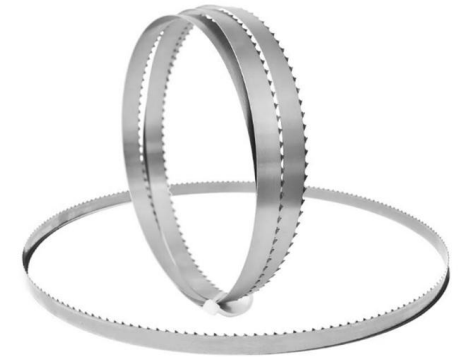
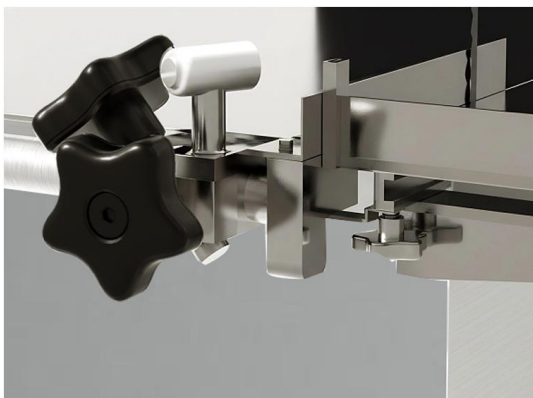




BONE SAW MACHINE MJG



MJG290



Saw blade guard



MJG290-320-350-420

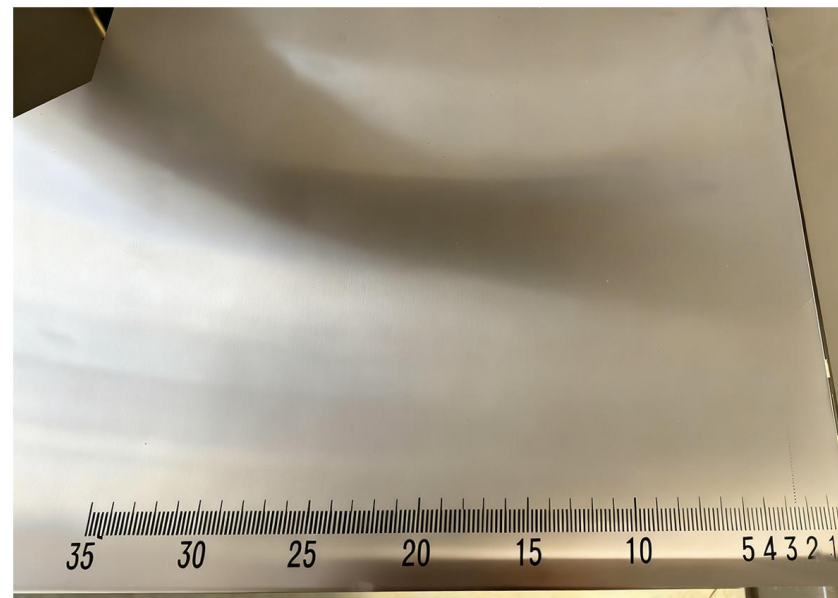
Half sliding table



MJG290-320-350-420



Scale marking



The adjustment device has a scale, making it convenient for the user to adjust.

MJG290-320-350-420



Knob adjustment device



Saw band clamping device, better fixing of the saw band, reducing vibration.

MJG290-320-350-420



MJG290-320-350-420



Hinged closing device



MJG290-320-350-420

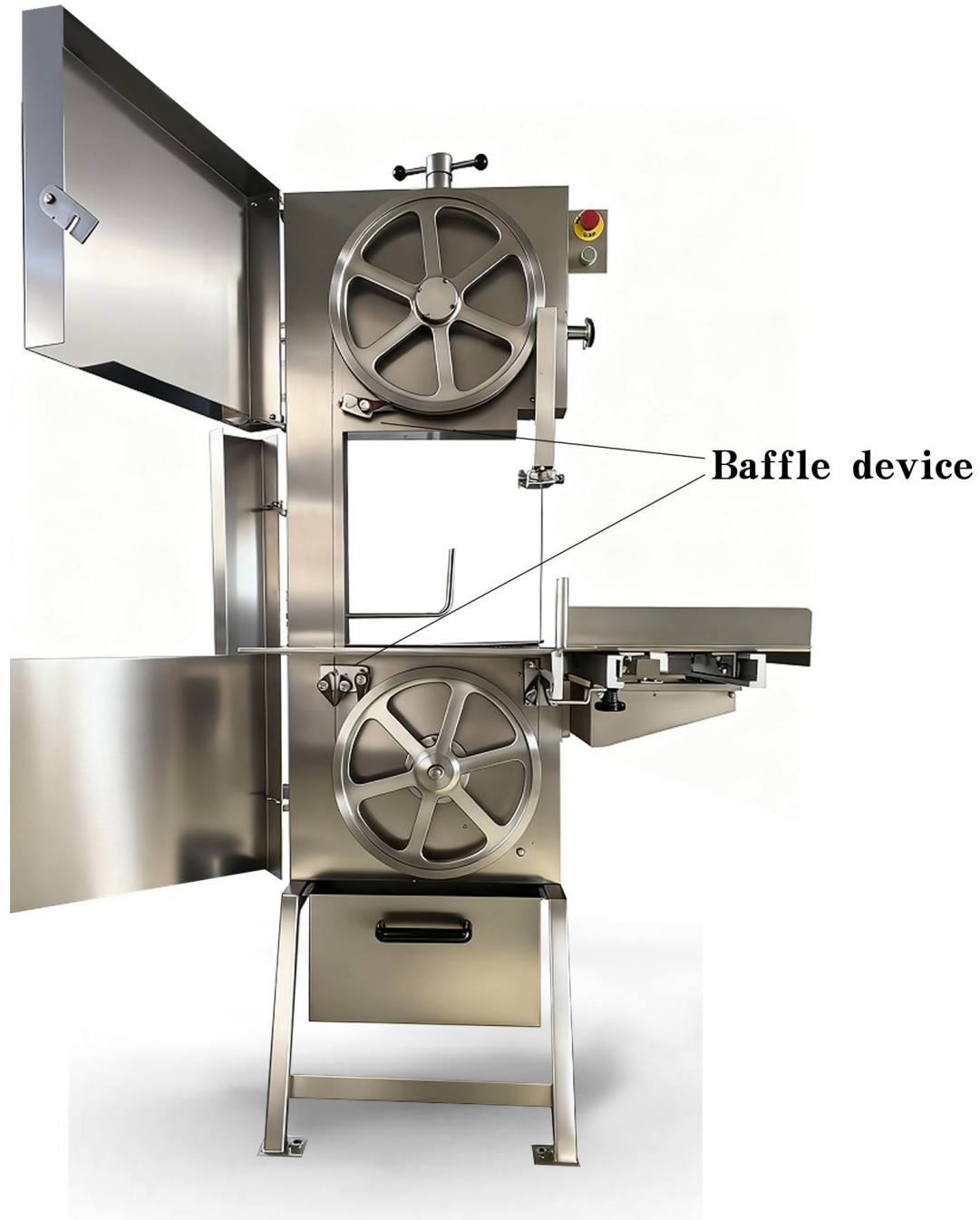


Internal chassis



Precision internal structure,
the whole machine is made of
304 stainless steel

MJG290-320-350-420



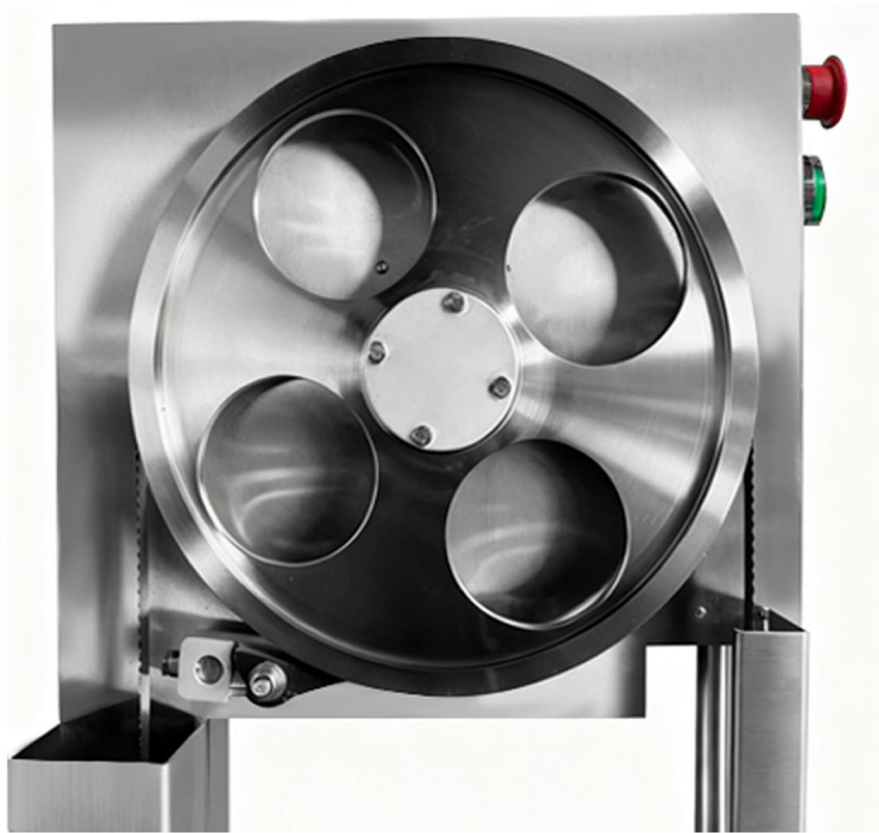
MJG290-320-350-420



Motor housing



MJG290-320-350-420

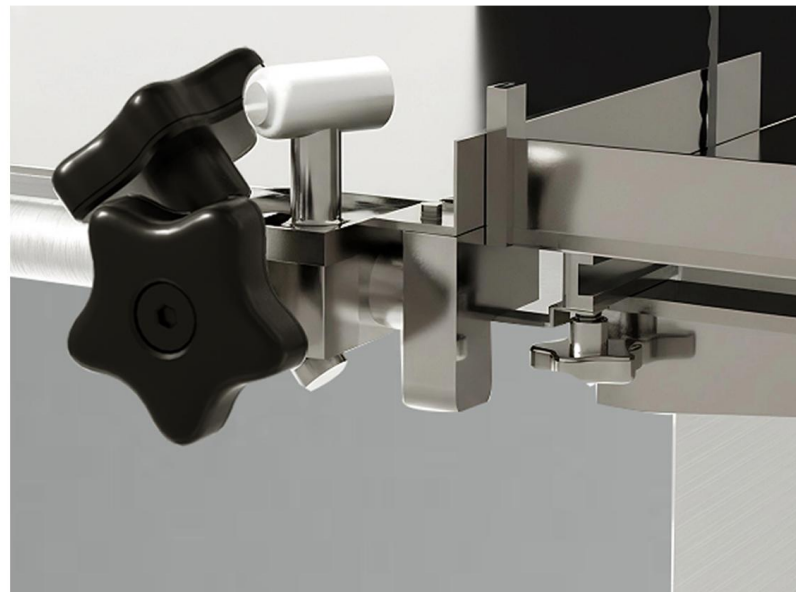


Detailed introduction

The saw band wheel is made of 304 stainless steel and features a double-sided design, making the saw band less likely to fall off.

MJG350-420

Knob adjustment device



MJG290-320-350-420



Waste bin

